

A

B

C

D

REVISIONS

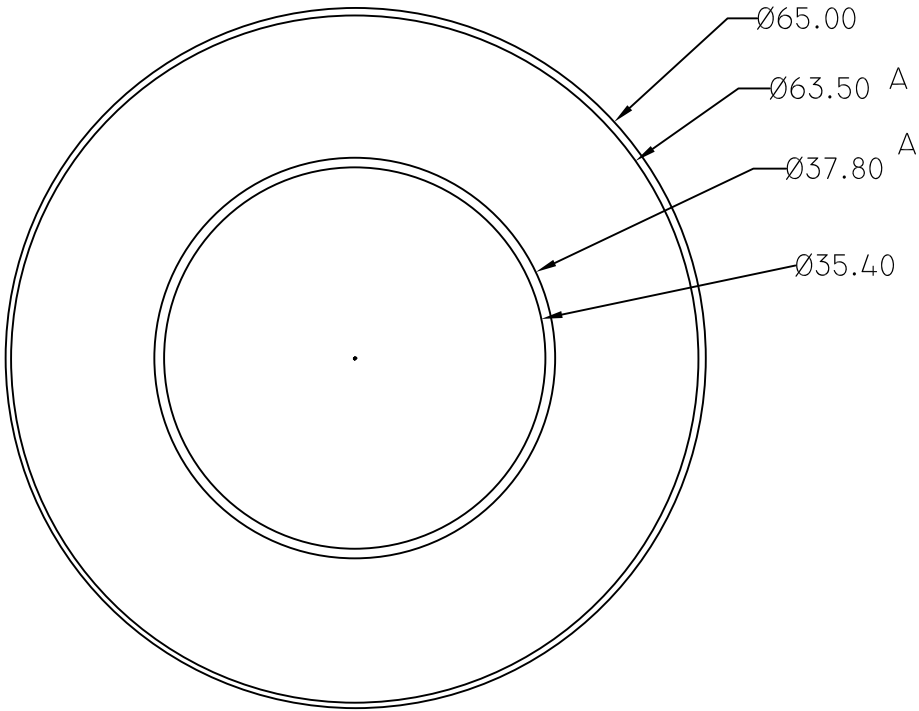
ZONE	REV.	DESCRIPTION	DATE	APPD.
A	1.	Ø63.50 WAS Ø 63.80, Ø37.80 WAS Ø 37.20	03.07.04	MANOJ

1

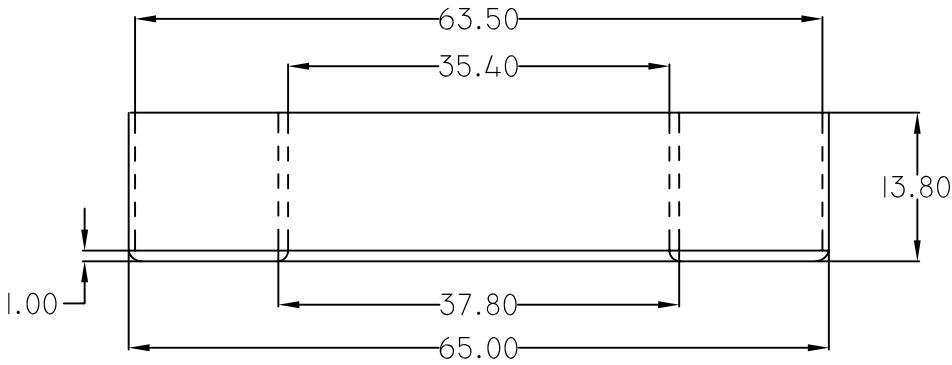
2

3

4

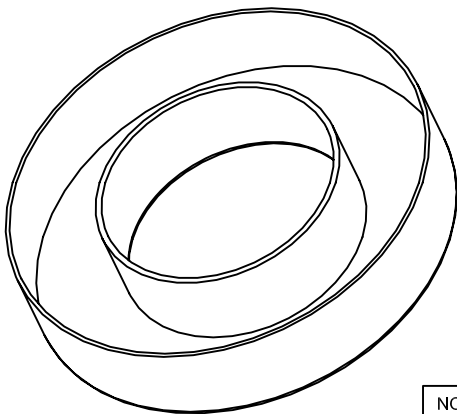


5



6

7



8

COMPONENT WEIGHT - 8.0 GMS

9

NOTE:
 (1) All dimensions are in mm.
 (2) Tolerance for all dimension is (±0.2)
 (3) Molding Material:
 (a) Zytel FR 50 BK 153J - UL & RoHS
 (b) Zytel 70G33L BK 031 - Non UL.
 (c) Zytel 70G33L NC 010 - Non UL
 (d) Ultramid A3X2G5 - UL & RoHS



DURGA ELECTRONICS(INDIA)

COMPONENT NAME: TORRIED CAP

PART NO: T-6325

REMARKS:

REV.
00

	NAME	SIGN.	DATE
DESIGN BY	SACHIDANAND	<i>Sachidanand</i>	10.12.02
CHECKED BY	MANOJ GUPTA		0.12.02
APPR. BY	MANOJ GUPTA		0.12.02

SCALE: NTS DRG. NO: DEI/DRG/0179

PATH
↓

D:\DURGA\RING CORE INSULATION COVER\T-6325